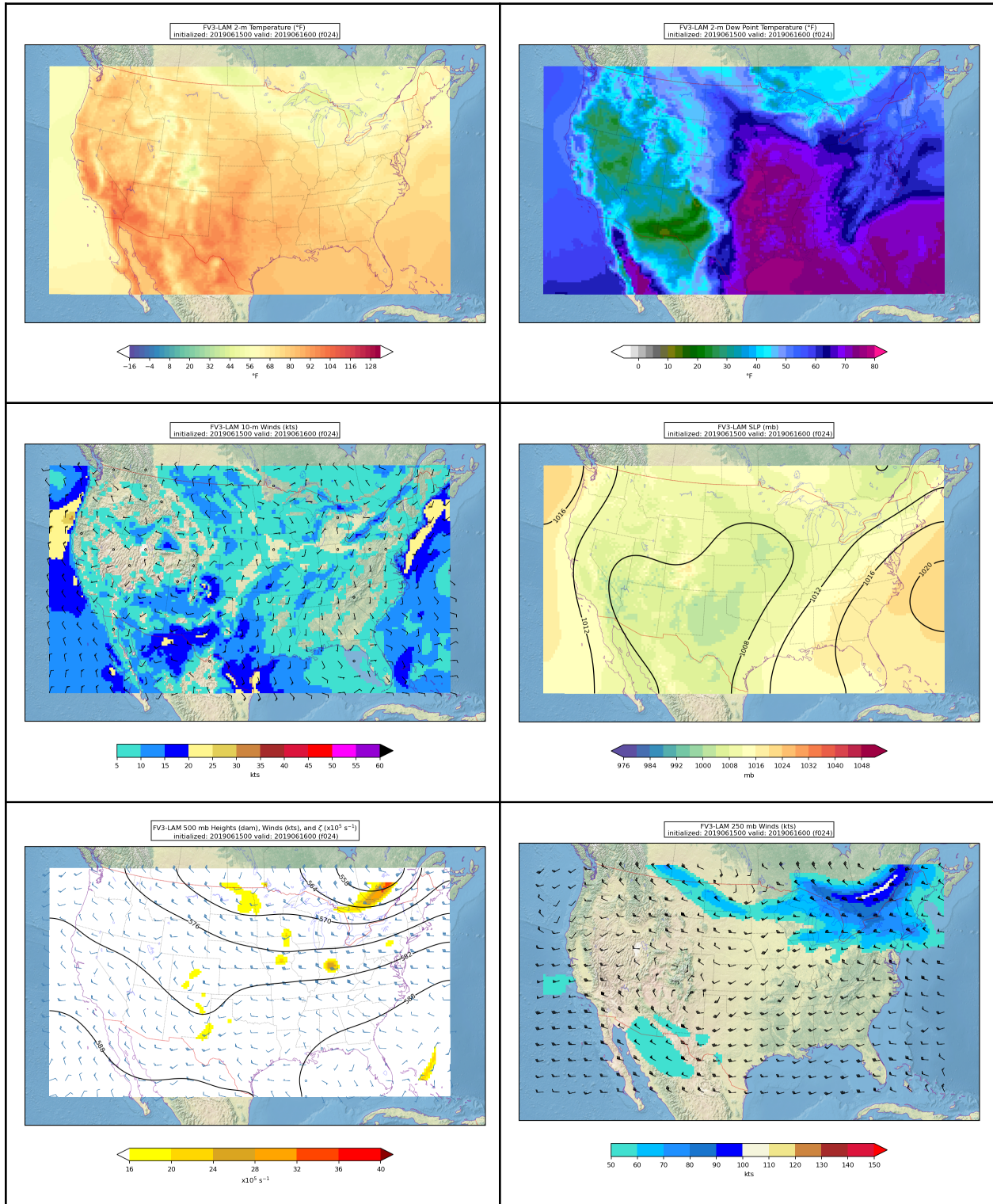
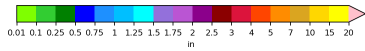
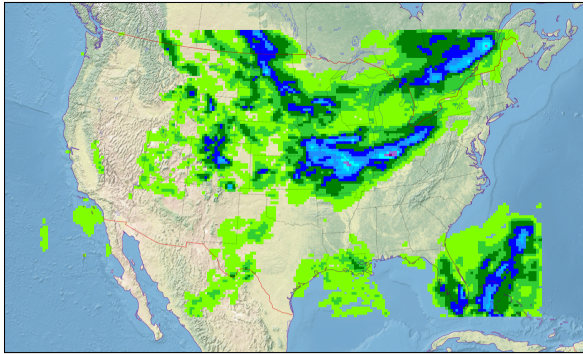


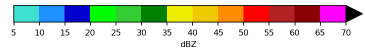
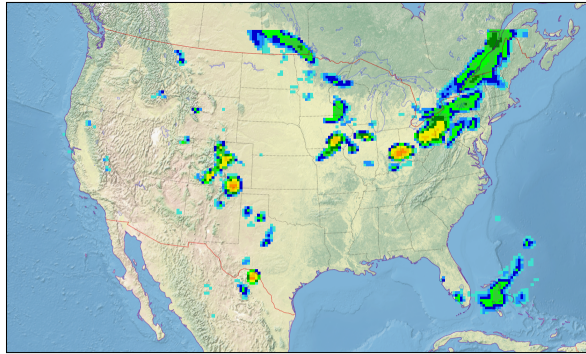
Step 1 - Control Case



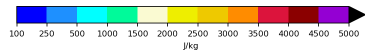
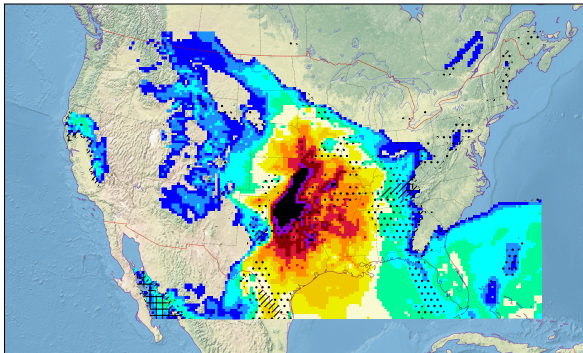
FV3-LAM 024-hr Accumulated Precipitation (in)
initialized: 2019061500 valid: 2019061600 (R024)



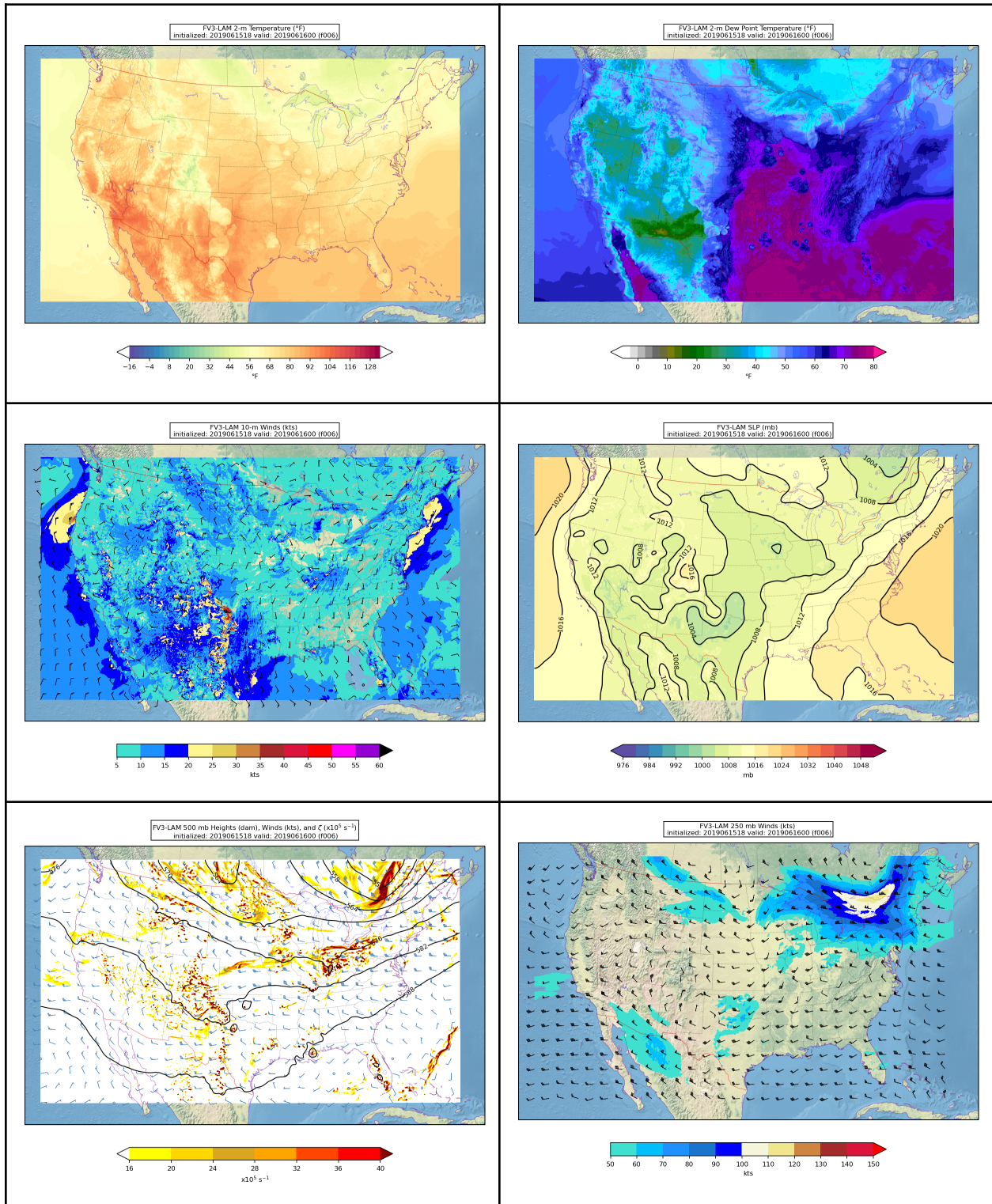
FV3-LAM Composite Reflectivity (dBZ)
initialized: 2019061500 valid: 2019061600 (R024)



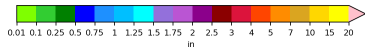
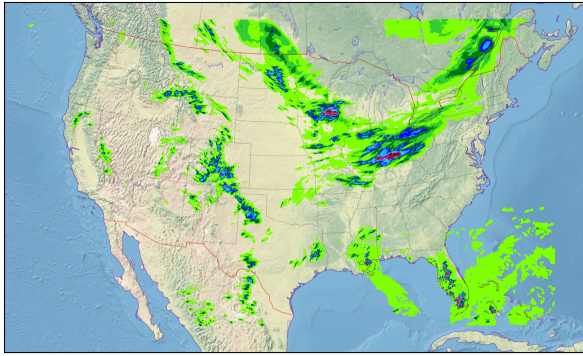
FV3-LAM Surface-Based CAPE (shaded) and CIN (hatched) (J/kg)
< 500 (r), 500<-250 (r), 250<-100 (g), 100<-25 (y)
initialized: 2019061500 valid: 2019061600 (R024)



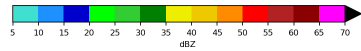
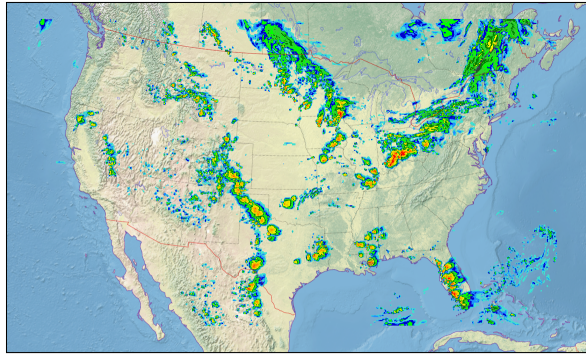
Step 2 - Horizontal resolution change experiment



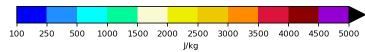
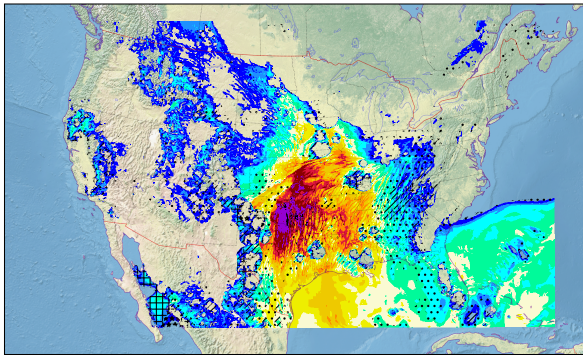
FV3-LAM 006-hr Accumulated Precipitation (in)
initialized: 2019061518 valid: 2019061600 (R006)



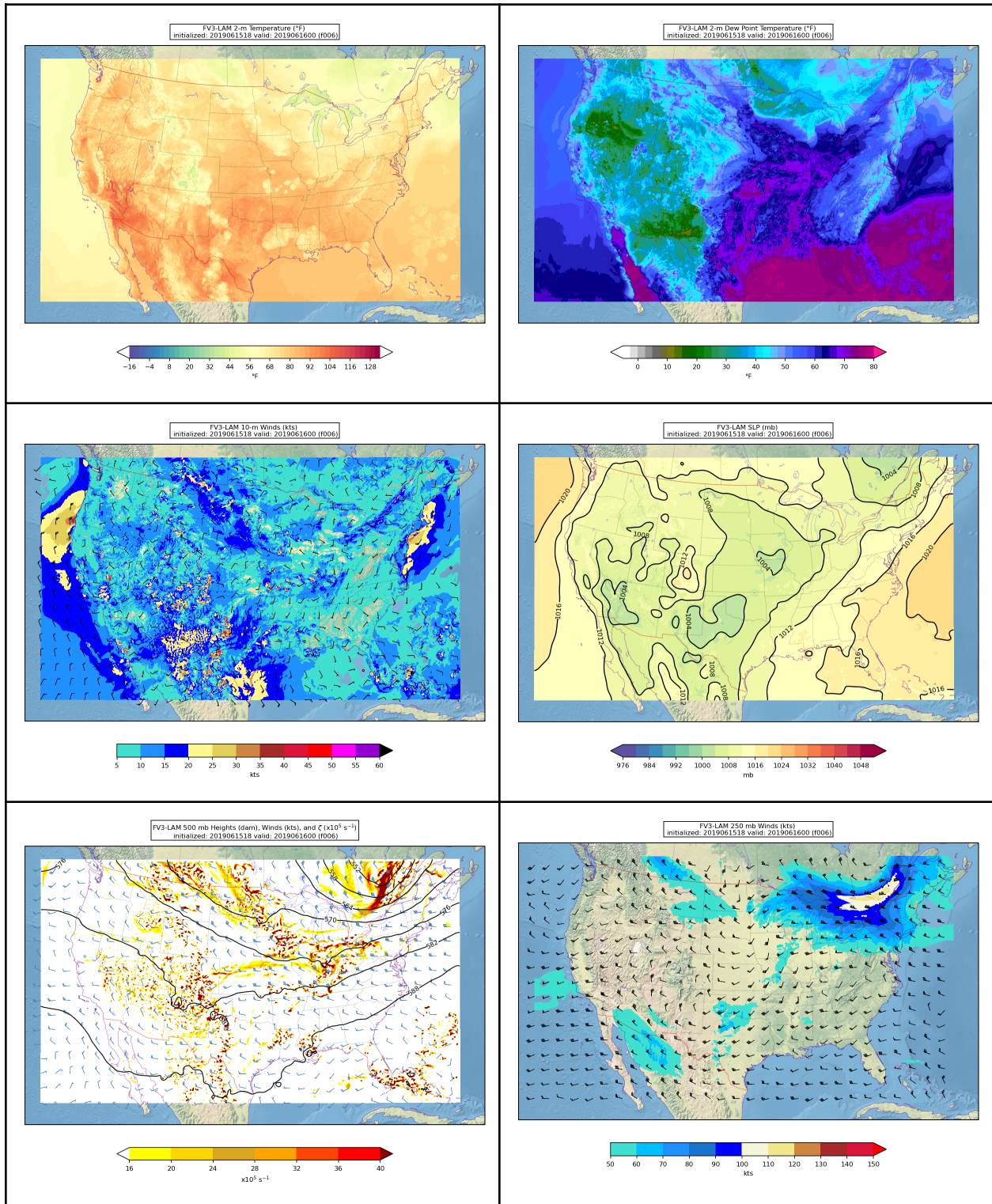
FV3-LAM Composite Reflectivity (dBZ)
initialized: 2019061518 valid: 2019061600 (R006)



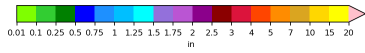
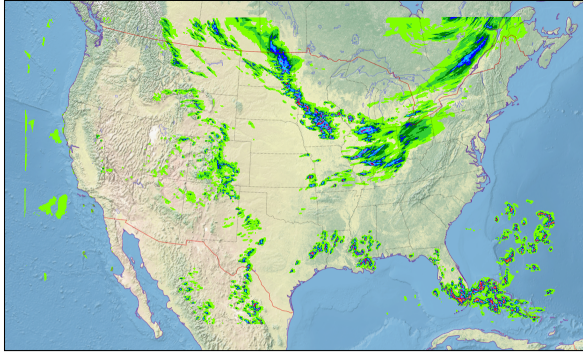
FV3-LAM Surface-Based CAPE (shaded) and CIN (hatched) (J/kg)
< 500 (r), 500<-250 (r), 250<-100 (g), 100<-25 (y)
initialized: 2019061518 valid: 2019061600 (R006)



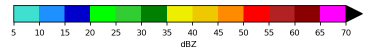
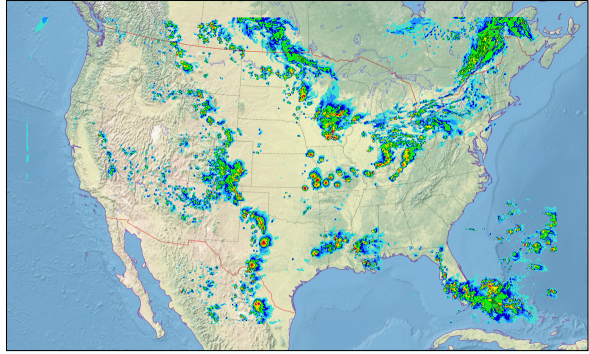
Step 3 - Physics suite change experiment



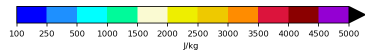
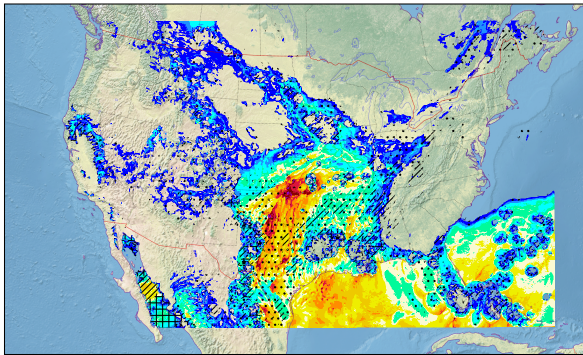
FV3-LAM 006-hr Accumulated Precipitation (in)
initialized: 2019061518 valid: 2019061600 (R006)



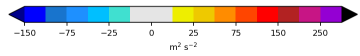
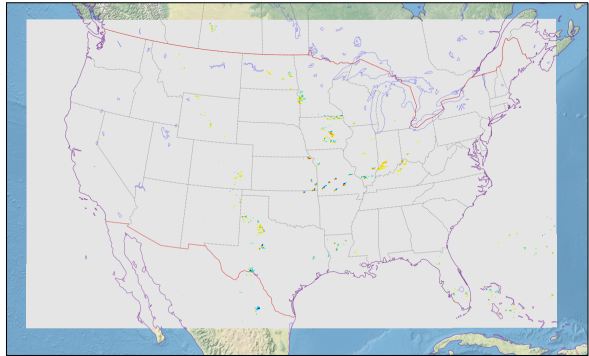
FV3-LAM Composite Reflectivity (dBZ)
initialized: 2019061518 valid: 2019061600 (R006)



FV3-LAM Surface-Based CAPE (shaded) and CIN (hatched) (J/kg)
< 500 (r), 500<-250 (r), 250<-100 (g), 100<-25 (y)
initialized: 2019061518 valid: 2019061600 (R006)



FV3-LAM 1-h Max/Min 2-5 km Updraft Helicity ($m^2 s^{-2}$)
initialized: 2019061518 valid: 2019061600 (R006)



Final Step - Compare the Outputs

